

SeamSAFE™

Installation Instructions

Roof Anchor | Roof Bracket | Anchor Accessories



SeamSAFE™
Roof Safety Anchors + Brackets
Construction Specialty Anchors, LLC



SeamSAFE.com • 855-263-1521

SeamSAFE Roof Anchor

Manufactured by Construction Specialty Anchors LLC, the SeamSAFE Roof Anchor has been tested to meet or exceed OSHA and ANSI standards. This anchor is intended to be a part of a complete fall arrest system meeting all OSHA requirements. All users must read, understand, and follow these manufacturer instructions and warnings for each component of the system before use. Failure to do so may result in serious injury or death.



This device does not guarantee your safety. Use of this device is only expected to reduce the likelihood of serious injury and limit the fall distance if a fall occurs. Additional personal protective equipment should also be considered to limit the likelihood of a fall.

The SeamSAFE Roof Anchor is only for use with compatible equipment as determined by a competent roofing professional. The user should wear a full-body harness and a shock-absorbing lanyard designed to reduce fall forces to 900 lbs. and to limit free fall to less than 6 feet, thereby reducing forces on the body to less than 1,800 lbs.

The SeamSAFE Standing Seam Roof Anchor is compatible with standing seam metal roof panels only if the roofing system is installed using the roofing-system manufacturer's instructions. Construction Specialty Anchors accepts no liability or responsibility for the safety of the user when using the SeamSAFE Roof Anchor on a roofing system that is not installed according to the roof-system manufacturer's instructions and guidelines.

Federal, state, and local laws and regulations (including but not limited to OSHA and ANSI) must be followed when installing, using, and removing fall protection equipment. These manufacturer instructions are to be incorporated into your safety program and used as part of an employee training program for the SeamSAFE Roof Anchor. It is the purchaser's responsibility to ensure that all users are provided with and have access to these manufacturer instructions and that they read and follow them carefully. If you have any questions concerning the compatibility, application, installation, use, or maintenance of the SeamSAFE Roof Anchor, please call 855-263-1521.

Failure to inspect, install, use, and/or remove equipment in a safe manner by skilled and trained craftsmen can result in serious injury or death. Each application will be different. You must plan for and follow safe work practices for each installation and removal of safety equipment.

The SeamSAFE Roof Anchor is designed for individual use on a standing seam roof. Maximum capacity is one person per anchor. The support structure must be capable of sustaining a 5,000 lb. static load. The user is responsible for determining which types of standing seam panels on which to use the SeamSAFE Roof Anchor. For a review of the SeamSAFE Roof Anchor's compatibility with a specific standing seam metal roof system, please call 855-263-1521.

CLEANING & STORAGE

The SeamSAFE Roof Anchor must be kept clean and free from dirt, dust, debris, rocks, corrosives, and other elements. Before and after each use, ensure the anchor is clean by wiping off surfaces and components. If necessary, use mild soap and water to clean the equipment, and then rinse and dry. When not in use, store the anchor in a cool dry place away from moisture, chemicals, and other elements that could harm it.

ANCHOR INSPECTION

Before installing a SeamSAFE Roof Anchor, an authorized, competent roofing professional must inspect the device for damage and defects. If damage or defects are found, do not use the device. After installation, inspect the anchor each day before use. Do not use the device if it was involved in a fall-arrest incident.

A competent roofing professional also must complete a formal inspection of the anchor a minimum of every six months and maintain an inspection log. The inspection log may be similar to the format below. It must include the date of first use and allow space for the competent roofing professional to initial after each six-month inspection. The inspection log must be visible and available to all users at all times.

INSPECTION RECORD

Product _____ Date of First Use _____

Date	Inspector Name	Observations	Pass/Fail	Action (if required)	Initials

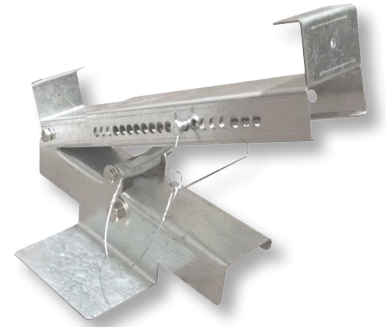
INSTALLATION

1. Create a secure safe zone and tie-off while anchor is being installed.
2. Use the clip included with the anchor to attach the anchor to your harness, which will allow you to be hands-free as you climb the ladder. The harness used must meet OSHA standards.
3. The anchor must be positioned a minimum of 4 feet away from the eave or any unprotected edge.
4. Attach the anchor by separating the two aluminum blocks and clamping them on a single standing seam of a metal roof. Never place anything between jaws of the device and the roof sheets. Metal-to-metal contact is required.
5. Check to make sure that the flange of the clamp is hooked under the seam over a clip that is fastened down before tightening the bolts.
6. Snug the center bolt followed by both end bolts. (This includes washers, nuts, and locking nuts.) Then use the same sequence to torque the bolts to 60 ft. lbs. This can be achieved using a 12" long 3/4" box-end wrench.
7. Attach your personal harness/lanyard system to the anchor. Make sure harness does not have enough slack to allow you to fall over the edge of the roof. Although the anchor will hold securely if the user falls over the edge of the roof, it is designed to break the user's fall on the roof.
8. If using multiple SeamSAFE Roof Anchors across a single roof area, place the anchors two or more roofing panel seams apart. Do not use more than one anchor per seam on panel sizes under 35 feet in total length.

Some roof material may be scratched, dimpled, dented, or bent by use of this device. This is more likely to happen if workers pull or push on the anchor, if workers are rough in placement/ removal of the anchor, or during a fall arrest. If damage occurs, the user is responsible for repairing marks, scratches, or other damage to roofs.

SeamSAFE Roof Bracket

SeamSAFE Roof Brackets are designed for use only with SeamSAFE Roof Anchors. A minimum of two SeamSAFE Roof Anchors and SeamSAFE Roof Brackets are required for all applications, however some applications may require more than two. This must be determined by an authorized, competent roofing professional. *Note: Always use a separate SeamSAFE Roof Anchor for personal fall-arrest protection during the installation and use of brackets.*



BRACKET INSPECTION

Before installing SeamSAFE Roof Brackets, an authorized, competent roofing professional must inspect devices for damage. Do not use if damaged. After installation, inspect brackets each day before use.

INSTALLATION

1. Create a safe zone and tie off while installation is performed.
2. Install SeamSAFE Roof Anchors in accordance with anchor instructions.
3. Remove center bolt and "D" ring from each anchor.
4. Place SeamSAFE Roof Bracket over anchor.
5. Line up holes on side and install 1/2" replacement bolt (1), nut (1) and washers (2); all provided with bracket.
6. Adjust bracket to achieve desired angle, install locking pin through top adjustable slide and leveling arm, and lock clip to hold in place.
7. Install walk board. Examine to ensure secure.

SeamSAFE Accessories

ACCESSORY INSPECTION

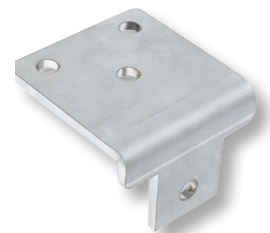
Before installing any SeamSAFE accessory, such as a SeamSAFE Mounting Adapter, SeamSAFE Toe Board Attachment or SeamSAFE Ladder Attachment, an authorized, competent roofing professional must inspect the device for damage. Do not use if damaged. After installation, inspect the accessory to ensure equipment is secure and will not detach. *Note: Always use a separate SeamSAFE Roof Anchor for personal fall-arrest protection during the installation and use of any SeamSAFE accessory.*

SEAMSAFE MOUNTING ADAPTER

The SeamSAFE Mounting Adapter is designed for use only with the SeamSAFE Roof Anchor to securely mount equipment to standing seam roofs.

INSTALLATION:

1. Create a safe zone and tie off while installation is performed.
2. Install SeamSAFE Roof Anchor in accordance with anchor instructions.
3. Remove "D" ring from anchor by removing the center bolt.
4. In the "D" ring's place, insert mounting adapter.
5. Secure by replacing the center bolt, including washers, nuts, and locking nuts.
6. Tighten using a 12" long 3/4" box-end wrench. Torque bolts to 60 ft. lbs. The mounting adapter is now ready to use.
7. Use appropriate fasteners that are compatible with the rooftop equipment to reliably attach to the adapter. Examine to ensure secure.



SEAMSAFE TOE BOARD ATTACHMENT

SeamSAFE Toe Board Attachments are designed for use only with SeamSAFE Roof Anchors to securely mount a toe board for roofing projects. Two anchors and two toe board attachments are required.

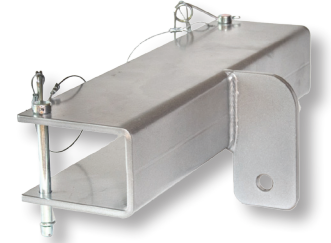


INSTALLATION:

1. Create a safe zone and tie off while installation is performed.
2. Install SeamSAFE Roof Anchors, in accordance with anchor instructions. Position them on the roof to accommodate the width of the toe board.
3. Remove the "D" ring from both anchors by removing the center bolt.
4. In the "D" ring's place, insert toe board attachments.
5. Secure each by replacing the center bolt, including washers, nuts, and locking nuts.
6. Tighten using a 12" long 3/4" box-end wrench. Torque bolts to 60 ft. lbs. The toe board attachments are now ready to use.
7. Insert the toe board into the attachments and screw the toe board in place.

SEAMSAFE LADDER ATTACHMENT

The SeamSAFE Ladder Attachment is designed for use only with a SeamSAFE Roof Anchor to install a rooftop ladder for access to different roof areas and levels. Two attachments and two anchors are required to secure the top and bottom of the ladder.



INSTALLATION:

1. Create a safe zone and tie off while installation is performed.
2. Install SeamSAFE Roof Anchors, in accordance with anchor instructions. Position the anchors to secure the top and bottom of the ladder.
3. Remove the "D" rings from the anchors by removing the center bolt.
4. In the "D" ring's place, insert the ladder attachments.
5. Secure by replacing the center bolt, including washers, nuts, and locking nuts.
6. Tighten using a 12" long 3/4" box-end wrench. Torque bolts to 60 ft. lbs. The ladder attachment is now ready to use.
7. Insert the ladder into the attachments and use the safety pins to hold the ladder in place.

SeamSAFE Return Policy and Warranty

RETURN POLICY

SeamSAFE products may be returned for a refund or exchange within 60 days of the original shipping postmark date on the original packaging. All returned units must be in "unused" condition. Refunds will only be reapplied to the original credit card used for the original purchase. There will be a 20% restocking fee applied to returns, in addition to any additional transaction fees required to return funds on the credit card. The customer is responsible for all return shipping expenses. To return your product, contact SeamSAFE at 855-263-1521 for authorization.

LIFETIME WARRANTY

All material and products supplied are warranted to be free from defects in materials, workmanship, and assembly (insofar as the products were preassembled, and to exclude the on-site assembly done by others) for the life of the product from the date of purchase, and are warranted to be compliant with generally accepted safety and health practices and OSHA regulations and interpretations in force as of the day of supply – when properly used by fully trained craftsmen under the supervision of a qualified person and a competent person who is their supervisor. User is advised that notices on the unit or instructions about dates or lengths of service, or for taking unit out of service are guidelines, are not any guarantee of any life expectancy or expiration date. The wearing out of a safety product is expected and is in relation to the kind of use and care it receives during its useful life.

Warranty does not cover wear and tear from heavy or normal use, abuse, accidents, chemical exposure, sunlight, welding or other UV damage, environment, or any other job condition or user imposed treatment. Buyer's/Users' sole remedy for the Warranty is for the user/buyer to return the goods for the price paid, or for replacement with like material and products, in new condition. Do not return any goods without authorization. To receive authorization, call 855-263-1521.

This is a limited warranty, insofar as the conditions of use, the purposes for use, the environmental conditions, the handling, installation, and assembly of a system by others, the use of non-supplied materials as part of the installation, the use of non-supplied components as part of a complete fall arrest system for the individual users, the qualifications and actions of supervision and competent qualified persons at a particular jobsite, and the personnel training for the various employees of various employers that may have access to the product, among other variables, are all completely out of the hands of the manufacturer and supplier, therefore there cannot be and there is not any further guarantee or warranty for the fitness for duty, fitness for purpose, fitness for any intended use, adequacy of instructions or warnings, merchantability, or any other warranty or guarantee of any kind or nature whatsoever. This warranty gives you specific legal rights. You may have additional legal rights in your state.

855-263-1521 • SeamSAFE.com

© Construction Specialty Anchors LLC

